

PRODUCTS FOR PLAIN INTERNAL DIAMETER GAUGING - PLAIN PLUG GAUGES

Application : Attribute inspection of internal diameters

MATERIAL

HARDENED & STABILIZED STEEL, AISI O1 / EN-31(SAE 52100), Hardness 60- 62 HRC.

☛ Close Tolerance Plugs are sub zero treated for dimensional stability.

☛ **TUNGSTEN CARBIDE OPTION WHERE EVER AVAILABLE IS SEPARATELY GIVEN IN THIS CATALOGUE.**

SPECIFICATION:

Basic Dimensions: ISO 286 Part 1 & 2- 2010 / IS 919 Part 1 & 2-1993

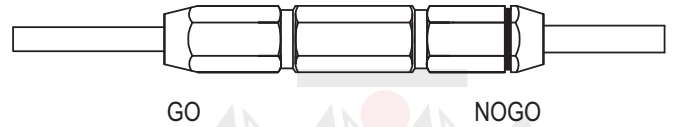
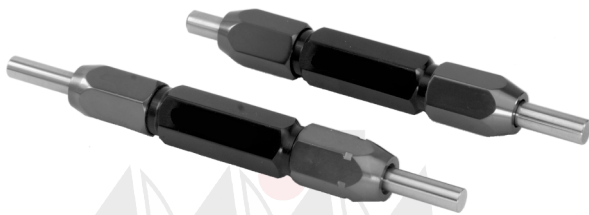
Gauging Practice: DIN 7164 - 1966 & IS 3455-1971, IS 7859-1975

DIAMETER 0.5MM – 10 MM. REVERSIBLE PIN TYPE DESIGN.

SPECIFICATION:

☛ Handle Design : ANSI B47.1 OR BS 1044 Part 1

☛ Handle in Anodized Aluminum with brass collets to hold gauging pin.



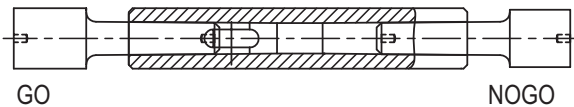
☛ **We can supply these reversible gauges in SOLID TUNGSTEN CARBIDE ON REQUEST. Carbide Gauges up to 8 mm diameter are available in reversible pin type design.**

DIAMETER 10 MM – 40 MM. TAPER LOCK DESIGN.

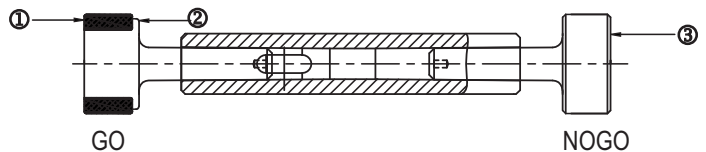
SPECIFICATION: Gauge Blanks : ISO 3670-1979 OR IS 6137-1983

Handle Design: ISO 3670-1979 OR IS 5388-1983 for handles.

STEEL



TUNGSTEN CARBIDE



① Tungsten Carbide Ring of Special Wear Resisting Grade.

② En-31 Shank to Support Carbide Ring

③ No GO Member of En - 31.

Go –Outer Ring of wear resistance grade Tungsten Carbide with EN 31 shank support.

Nogo- in stabilized steel AISI O-1 / EN 31 (SAE 52100), Hardness 60- 62 HRC.

☛ Go & Nogo both in Carbide can be supplied for Special customer request



PRODUCTS FOR PLAIN INTERNAL DIAMETER GAUGING - PLAIN PLUG GAUGES

Application : Attribute inspection of internal diameters

DIAMETER 40MM – 100 MM. TRILOCK DESIGN.

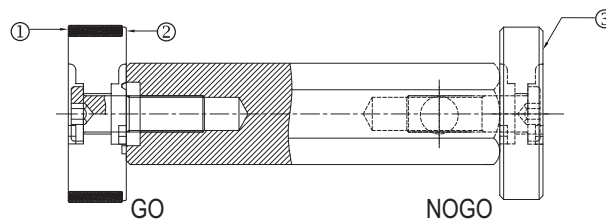
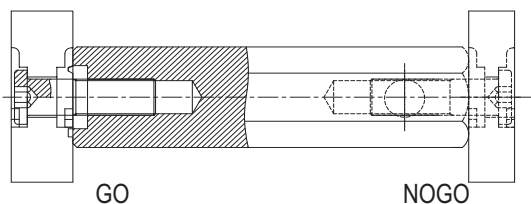
It is possible to supply Plain plug gauges more than 100mm in Trilock design, in steel on specific customer request.

SPECIFICATION: Gauge Blanks : ISO 3670-1979 OR IS 6244-1980
 Handle Design: ISO 3670 - 1979 OR IS 5388-1983 for handles.

STEEL

TUNGSTEN CARBIDE (up to 60 mm diameter)*

Go in Carbide & Nogo in stabilized steel. (Common practice)



- ① Tungsten Carbide Ring of Special Wear Resisting Grade.
 - ② En-31 Shank to Support Carbide Ring
 - ③ No GO Member of En - 31.
- * Tungsten Carbide upto 60 mm diameter are available in this design.

DIAMETER 100 MM – 300MM. PLATE TYPE GAUGES IN STEEL.

SPECIFICATION:
 Our own company standard.

